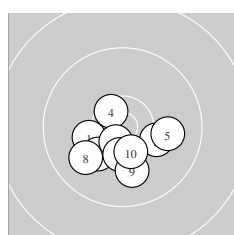
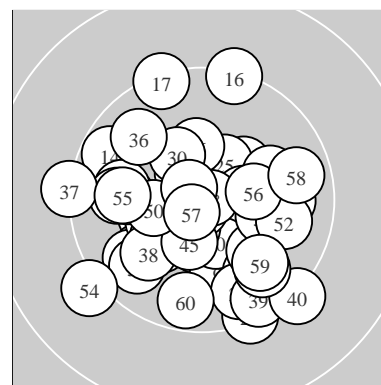
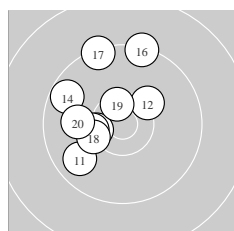


Ergebnis:	<b>606.0</b>	(579)
Serien:	102.5	100.1 101.8 98.4 102.9 100.3
Zähler:	39	21 0 0 0 0 0 0 0 0
Innenzehner:	22	
weiteste:	1428	(54), 1350 (40), 1330 (37)
beste Teiler	87.3	(48.) 93.0 (29.) 94.9 (43.)
Trefferlage	0.35 mm	links, 1.50 mm tief
Streuwert	5.26,	horizontal: 5.65, vertikal: 4.85



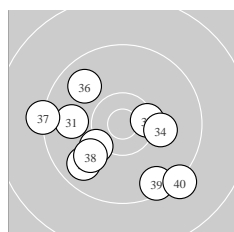
Serie 1:	10.2 ↙	10.2 ↘	10.2 →	10.5 *	10.0 →
	10.6 *	10.4 *	10.0 ↙	10.0 ↓	10.4 *
beste Teiler	266.1	(6.) 326.4 (4.) 430.0 (10.)			
Trefferlage	0.32 mm	links, 2.99 mm tief			
Streuwert	3.71,	horizontal: 4.50, vertikal: 2.71			



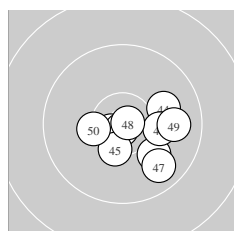
Serie 2:	9.8 ↙	10.3 ↗	10.4 *	9.7 ↖	10.3 *
	9.4 ↑	9.4 ↓	10.3 *	10.5 *	10.0 ←
beste Teiler	343.5	(19.) 442.1 (13.) 513.8 (15.)			
Trefferlage	3.56 mm	links, 2.62 mm hoch			
Streuwert	5.19,	horizontal: 4.43, vertikal: 5.85			



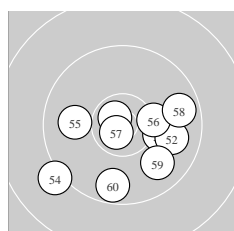
Serie 3:	9.9 ↘	9.4 ↓	9.9 ←	10.5 *	10.4 *
	10.3 ↑	10.6 *	9.7 ↓	10.8 *	10.3 *
beste Teiler	93.0	(29.) 290.6 (27.) 332.7 (24.)			
Trefferlage	0.05 mm	links, 1.69 mm tief			
Streuwert	5.05,	horizontal: 4.05, vertikal: 5.89			



Serie 4:	9.9 ←	10.4 *	10.2 ↙	10.2 →	9.8 ↙
	9.8 ↖	9.3 ←	10.0 ↙	9.5 ↓	9.3 ↘
beste Teiler	413.5	(32.) 574.2 (33.) 637.5 (34.)			
Trefferlage	1.87 mm	links, 2.75 mm tief			
Streuwert	6.50,	horizontal: 7.61, vertikal: 5.16			



Serie 5:	10.7 *	10.0 ↘	10.8 *	10.0 →	10.4 *
	10.2 →	9.8 ↘	10.8 *	9.9 →	10.3 *
beste Teiler	87.3	(48.) 94.9 (43.) 225.7 (41.)			
Trefferlage	2.53 mm	rechts, 1.70 mm tief			
Streuwert	3.79,	horizontal: 4.54, vertikal: 2.83			



Serie 6:	10.2 →	9.9 →	10.7 *	9.2 ↙	10.0 ←
	10.3 *	10.7 *	9.7 →	9.9 ↘	9.7 ↓
beste Teiler	161.8	(57.) 176.1 (53.) 521.8 (56.)			
Trefferlage	1.15 mm	rechts, 2.50 mm tief			
Streuwert	5.80,	horizontal: 6.95, vertikal: 4.36			

Meyton Elektronik