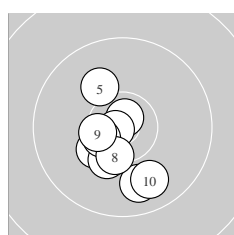
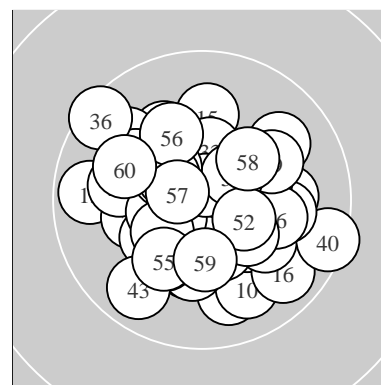
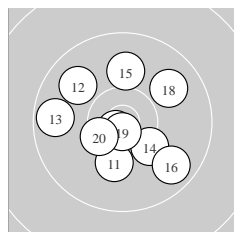


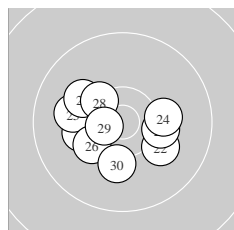
Ergebnis:	615.5	(591)
Serien:	103.5	101.8 102.2 102.0 102.5 103.5
Zähler:	51	9 0 0 0 0 0 0 0 0
Innenzehner:	26	
weiteste:	1169 (40), 1156 (36), 996 (13)	
beste Teiler	111.3 (4.)	134.1 (47.) 141.1 (19.)
Trefferlage	0.23 mm links, 0.67 mm tief	
Streuwert	4.32, horizontal: 4.72, vertikal: 3.87	



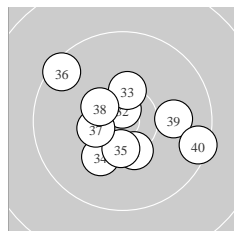
Serie 1:	10.3 *	10.8 *	10.3 ↙	10.8 *	10.1 ↘
	9.9 ↓	10.5 *	10.4 *	10.5 *	9.9 ↘
beste Teiler	111.3 (4.)	142.4 (2.)	350.2 (7.)		
Trefferlage	1.20 mm links, 2.36 mm tief				
Streuwert	3.57, horizontal: 2.70, vertikal: 4.27				



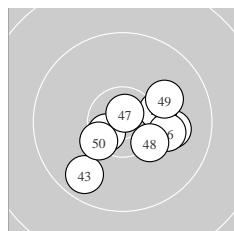
Serie 2:	10.2 ↓	9.9 ↖	9.7 ←	10.3 ↘	10.0 ↑
	9.8 ↘	10.8 *	9.9 ↗	10.8 *	10.4 *
beste Teiler	141.1 (19.)	148.5 (17.)	406.3 (20.)		
Trefferlage	0.38 mm links, 0.19 mm tief				
Streuwert	5.15, horizontal: 5.47, vertikal: 4.80				



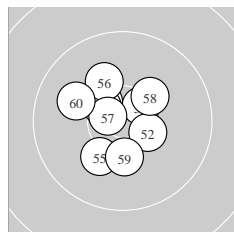
Serie 3:	10.2 ←	10.1 ↘	10.2 →	10.2 →	10.0 ←
	10.2 ↙	10.1 ↖	10.4 *	10.6 *	10.2 ↓
beste Teiler	277.3 (29.)	464.9 (28.)	562.2 (26.)		
Trefferlage	1.36 mm links, 0.76 mm tief				
Streuwert	4.29, horizontal: 5.24, vertikal: 3.06				



Serie 4:	10.4 *	10.7 *	10.4 *	10.2 ↙	10.4 *
	9.5 ↖	10.4 *	10.5 *	10.0 →	9.5 →
beste Teiler	175.0 (32.)	397.6 (38.)	407.8 (35.)		
Trefferlage	0.12 mm rechts, 0.23 mm tief				
Streuwert	5.06, horizontal: 5.80, vertikal: 4.18				



Serie 5:	10.1 →	10.0 →	9.8 ↙	10.3 →	10.6 *
	10.1 →	10.8 *	10.3 *	10.1 →	10.4 *
beste Teiler	134.1 (47.)	286.2 (45.)	450.5 (50.)		
Trefferlage	2.47 mm rechts, 1.28 mm tief				
Streuwert	4.05, horizontal: 4.84, vertikal: 3.07				



Serie 6:	10.5 *	10.4 *	10.5 *	10.5 *	10.2 ↙
	10.1 ↘	10.7 *	10.3 ↗	10.3 ↓	10.0 ↖
beste Teiler	230.2 (57.)	350.3 (51.)	367.9 (54.)		
Trefferlage	1.02 mm links, 0.80 mm hoch				
Streuwert	3.66, horizontal: 3.57, vertikal: 3.74				

Meyton Elektronik