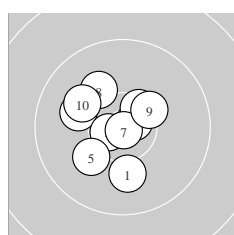
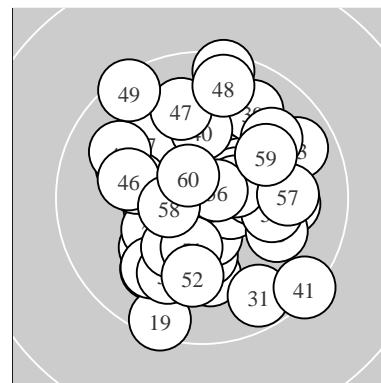
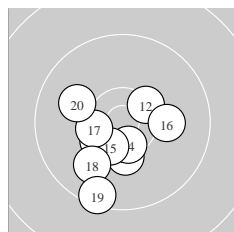


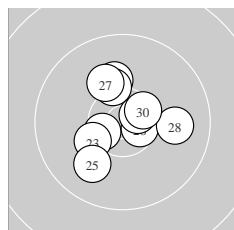
Ergebnis:	<b>612.0</b>	(589)					
Serien:	103.7	102.0	103.0	101.4	99.0	102.9	
Zähler:	49	11	0	0	0	0	0
Innenzehner:	25						
weiteste:	1229 (41), 1174 (49), 1164 (44)						
beste Teiler	49.0 (7.) 92.6 (32.) 149.3 (56.)						
Trefferlage	0.03 mm rechts, 0.38 mm hoch						
Streuwert	4.72, horizontal: 4.51, vertikal: 4.92						



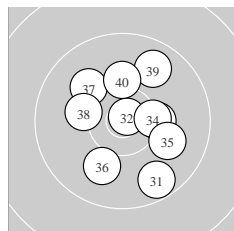
Serie 1:	10.1 ↓	10.7 *	10.1 ↖	10.7 *	10.1 ↙
	10.5 *	10.9 *	10.1 ↘	10.4 *	10.1 ↗
beste Teiler	49.0 (7.) 188.0 (2.) 224.6 (4.)				
Trefferlage	1.40 mm links, 0.49 mm hoch				
Streuwert	3.79, horizontal: 3.75, vertikal: 3.83				



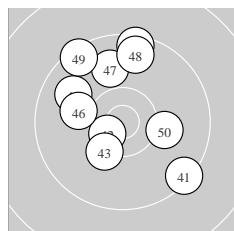
Serie 2:	10.4 *	10.4 *	10.3 *	10.5 *	10.4 *
	10.1 →	10.4 *	10.0 ↗	9.5 ↓	10.0 ↖
beste Teiler	350.4 (14.) 411.0 (15.) 436.6 (12.)				
Trefferlage	1.36 mm links, 2.81 mm tief				
Streuwert	4.18, horizontal: 4.17, vertikal: 4.20				



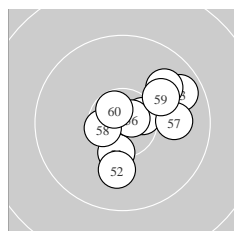
Serie 3:	10.1 ↑	10.5 *	10.3 ↙	10.3 ↑	10.0 ↘
	10.6 *	10.1 ↘	10.0 →	10.6 *	10.5 *
beste Teiler	250.4 (29.) 273.9 (26.) 339.4 (22.)				
Trefferlage	0.16 mm links, 0.82 mm hoch				
Streuwert	4.05, horizontal: 4.00, vertikal: 4.09				



Serie 4:	9.7 ↘	10.8 *	10.3 *	10.4 *	10.0 ↘
	10.0 ↙	10.0 ↘	10.2 ↖	9.8 ↗	10.2 ↑
beste Teiler	92.6 (32.) 454.5 (34.) 525.0 (33.)				
Trefferlage	1.27 mm rechts, 0.29 mm hoch				
Streuwert	5.03, horizontal: 4.66, vertikal: 5.38				



Serie 5:	9.4 ↘	10.6 *	10.3 *	9.5 ↑	9.9 ↖
	10.1 ↖	9.9 ↑	9.7 ↑	9.5 ↘	10.1 →
beste Teiler	290.4 (42.) 521.5 (43.) 642.3 (50.)				
Trefferlage	0.81 mm links, 2.97 mm hoch				
Streuwert	6.24, horizontal: 5.63, vertikal: 6.79				



Serie 6:	10.4 *	10.1 ↓	9.7 ↗	10.6 *	9.9 ↗
	10.8 *	10.0 →	10.6 *	10.1 ↗	10.7 *
beste Teiler	149.3 (56.) 237.5 (60.) 308.5 (58.)				
Trefferlage	2.67 mm rechts, 0.55 mm hoch				
Streuwert	4.05, horizontal: 4.20, vertikal: 3.89				

Meyton Elektronik