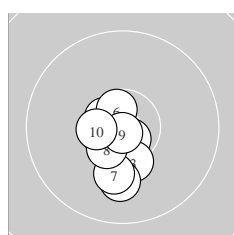
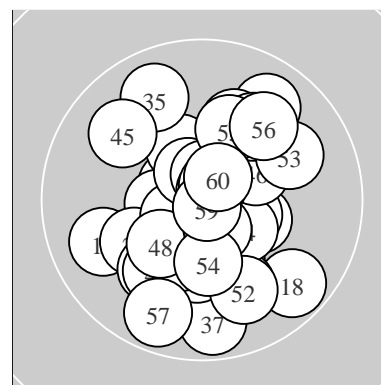
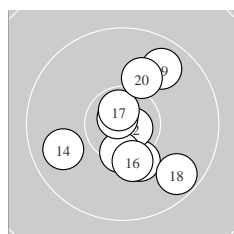


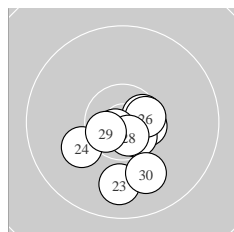
Ergebnis:	621.5	(590)					
Serien:	104.8	102.8	104.4	103.0	103.5	103.0	
Zähler:	50	10	0	0	0	0	0
Innenzehner:	38						
weiteste:	1009 (18), 998 (37), 995 (57)						
beste Teiler	70.4 (59.) 79.1 (9.) 101.2 (49.)						
Trefferlage	0.39 mm rechts, 1.18 mm tief						
Streuwert	3.79, horizontal: 3.16, vertikal: 4.33						



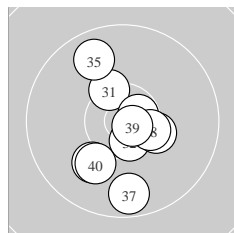
Serie 1:	10.7 *	10.6 *	10.3 *	10.0 ↓	10.6 *
	10.6 *	10.1 ↓	10.5 *	10.9 *	10.5 *
beste Teiler	79.1 (9.) 194.9 (1.) 253.3 (6.)				
Trefferlage	1.10 mm links, 2.11 mm tief				
Streuwert	2.56, horizontal: 1.69, vertikal: 3.20				



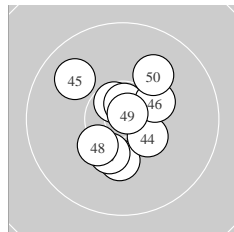
Serie 2:	10.3 ↘	10.8 *	10.5 *	9.8 ↙	10.8 *
	10.3 *	10.7 *	9.7 ↘	9.8 ↗	10.1 ↗
beste Teiler	106.9 (15.) 145.0 (12.) 196.0 (17.)				
Trefferlage	1.07 mm rechts, 0.81 mm tief				
Streuwert	4.56, horizontal: 4.15, vertikal: 4.94				



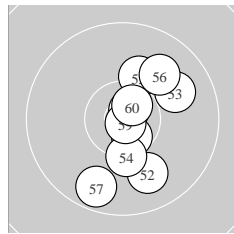
Serie 3:	10.5 *	10.6 *	9.9 ↓	10.1 ↙	10.6 *
	10.6 *	10.8 *	10.7 *	10.6 *	10.0 ↓
beste Teiler	141.4 (27.) 201.9 (28.) 264.8 (29.)				
Trefferlage	0.57 mm rechts, 2.39 mm tief				
Streuwert	3.03, horizontal: 2.93, vertikal: 3.12				



Serie 4:	10.4 *	10.6 *	10.1 ↙	10.3 *	9.8 ↘
	10.7 *	9.7 ↓	10.5 *	10.8 *	10.1 ↙
beste Teiler	148.4 (39.) 229.7 (36.) 285.6 (32.)				
Trefferlage	0.00 mm, 1.41 mm tief				
Streuwert	4.35, horizontal: 3.22, vertikal: 5.24				



Serie 5:	10.6 *	10.7 *	10.2 ↓	10.4 *	9.9 ↘
	10.3 *	10.3 *	10.3 *	10.8 *	10.0 ↗
beste Teiler	101.2 (49.) 212.0 (42.) 257.5 (41.)				
Trefferlage	0.03 mm links, 0.26 mm hoch				
Streuwert	3.82, horizontal: 3.48, vertikal: 4.14				



Serie 6:	10.6 *	9.9 ↘	9.9 ↗	10.3 *	10.2 ↗
	10.0 ↗	9.7 ↓	10.8 *	10.9 *	10.7 *
beste Teiler	70.4 (59.) 150.2 (58.) 228.3 (60.)				
Trefferlage	1.86 mm rechts, 0.60 mm tief				
Streuwert	4.32, horizontal: 2.92, vertikal: 5.36				

Meyton Elektronik