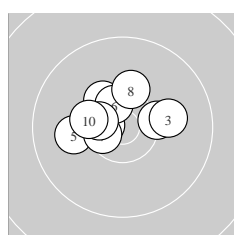
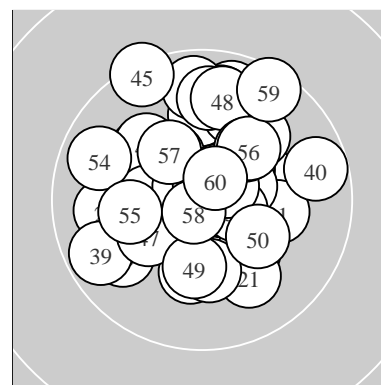
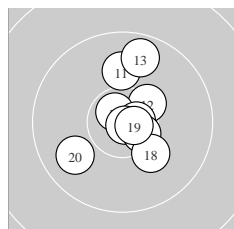


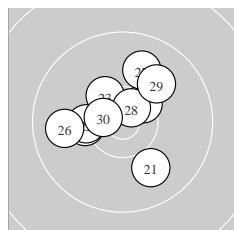
Ergebnis:	<b>614.6</b>	(587)							
Serien:	103.4	103.7	102.4	101.6	100.5	103.0			
Zähler:	47	13	0	0	0	0	0	0	0
Innenzehner:	27								
weiteste:	1222 (45), 1132 (59), 1036 (40)								
beste Teiler	55.0 (16.)	113.0 (34.)	127.8 (58.)						
Trefferlage	0.30 mm links, 1.66 mm hoch								
Streuwert	4.32, horizontal: 4.31, vertikal: 4.33								



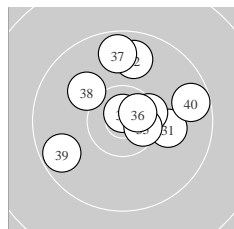
Serie 1:					
	10.3 *	10.3 *	10.1 →	10.6 *	10.0 ←
	10.5 *	10.6 *	10.2 ↑	10.5 *	10.3 *
beste Teiler	250.8 (4.)	311.2 (7.)	355.1 (9.)		
Trefferlage	1.21 mm links, 1.53 mm hoch				
Streuwert	3.42, horizontal: 4.34, vertikal: 2.14				



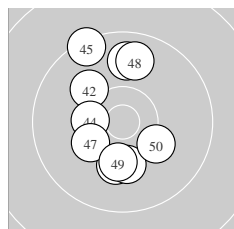
Serie 2:					
	10.0 ↑	10.4 *	9.7 ↑	10.7 *	10.7 *
	10.9 *	10.5 *	10.2 ↘	10.7 *	9.9 ↙
beste Teiler	55.0 (16.)	174.0 (19.)	187.6 (14.)		
Trefferlage	0.88 mm rechts, 0.92 mm hoch				
Streuwert	4.00, horizontal: 3.22, vertikal: 4.64				



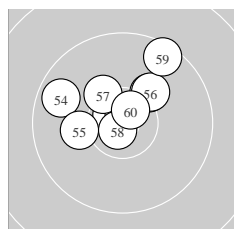
Serie 3:					
	10.0 ↘	10.4 *	10.4 *	10.3 ←	10.3 ←
	9.9 ←	9.9 ↑	10.6 *	10.0 ↗	10.6 *
beste Teiler	245.6 (28.)	292.0 (30.)	403.0 (22.)		
Trefferlage	0.85 mm links, 1.40 mm hoch				
Streuwert	4.35, horizontal: 4.70, vertikal: 3.98				



Serie 4:					
	10.1 →	9.8 ↑	10.5 *	10.8 *	10.6 *
	10.6 *	9.7 ↑	10.1 ↘	9.7 ↙	9.7 →
beste Teiler	113.0 (34.)	251.9 (36.)	310.7 (35.)		
Trefferlage	1.23 mm rechts, 2.29 mm hoch				
Streuwert	4.99, horizontal: 5.45, vertikal: 4.48				



Serie 5:					
	10.1 ↓	10.1 ↘	10.2 ↓	10.4 *	9.4 ↖
	9.8 ↑	10.3 ↙	9.8 ↑	10.2 ↓	10.2 ↘
beste Teiler	475.7 (44.)	560.0 (47.)	585.7 (50.)		
Trefferlage	1.34 mm links, 0.93 mm hoch				
Streuwert	5.46, horizontal: 3.47, vertikal: 6.90				



Serie 6:					
	10.7 *	10.8 *	10.2 ↗	9.7 ↖	10.1 ←
	10.2 ↗	10.3 *	10.8 *	9.5 ↗	10.7 *
beste Teiler	127.8 (58.)	149.6 (52.)	197.0 (51.)		
Trefferlage	0.53 mm links, 2.89 mm hoch				
Streuwert	4.00, horizontal: 4.68, vertikal: 3.17				

Meyton Elektronik