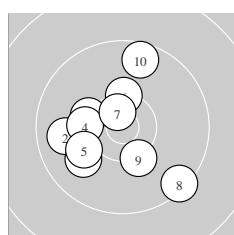
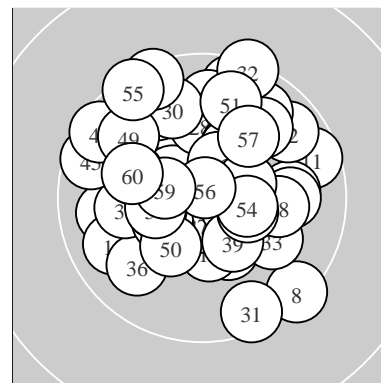
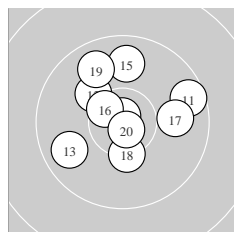


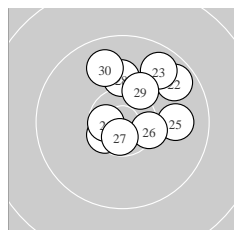
Ergebnis:	607.3	(578)
Serien:	100.7 101.5 101.9 100.6 101.1 101.5	
Zähler:	38 22 0 0 0 0 0 0 0	
Innenzehner:	25	
weiteste:	1242 (32), 1219 (8), 1174 (52)	
beste Teiler	92.0 (14.) 96.8 (56.) 126.5 (20.)	
Trefferlage	0.33 mm links, 1.53 mm hoch	
Streuwert	5.04, horizontal: 5.15, vertikal: 4.94	



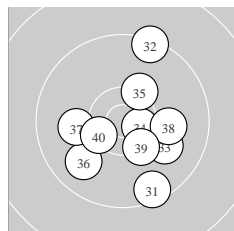
Serie 1:	10.3 ↖	9.8 ←	10.0 ↙	10.2 ←	10.1 ↙
	10.4 *	10.6 *	9.4 ↘	10.3 *	9.6 ↑
beste Teiler	241.9 (7.)	480.3 (6.)	530.4 (9.)		
Trefferlage	1.83 mm links, 0.35 mm tief				
Streuwert	5.43, horizontal: 5.39, vertikal: 5.47				



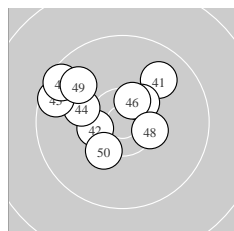
Serie 2:	9.6 →	10.2 ↘	9.8 ↙	10.8 *	9.8 ↑
	10.5 *	9.9 →	10.3 *	9.8 ↘	10.8 *
beste Teiler	92.0 (14.)	126.5 (20.)	336.6 (16.)		
Trefferlage	0.05 mm rechts, 1.82 mm hoch				
Streuwert	5.09, horizontal: 5.53, vertikal: 4.61				



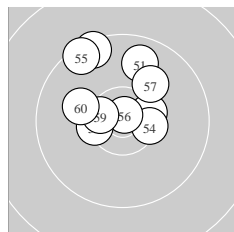
Serie 3:	10.5 *	9.7 ↗	9.8 ↗	10.6 *	9.9 →
	10.4 *	10.7 *	10.1 ↑	10.3 ↗	9.9 ↘
beste Teiler	230.0 (27.)	255.4 (24.)	333.0 (21.)		
Trefferlage	1.95 mm rechts, 2.80 mm hoch				
Streuwert	4.28, horizontal: 4.27, vertikal: 4.29				



Serie 4:	9.5 ↘	9.4 ↑	10.0 ↘	10.6 *	10.3 *
	9.9 ↙	10.1 ←	10.1 →	10.3 *	10.4 *
beste Teiler	277.6 (34.)	421.3 (40.)	485.5 (39.)		
Trefferlage	1.35 mm rechts, 1.27 mm tief				
Streuwert	5.55, horizontal: 5.06, vertikal: 6.00				



Serie 5:	9.9 ↗	10.4 *	10.4 *	10.1 ↖	9.6 ↖
	10.5 *	9.6 ↘	10.4 *	9.9 ↘	10.3 *
beste Teiler	357.1 (46.)	410.9 (43.)	429.1 (42.)		
Trefferlage	2.55 mm links, 2.34 mm hoch				
Streuwert	4.75, horizontal: 5.71, vertikal: 3.55				



Serie 6:	9.8 ↑	9.5 ↘	10.4 *	10.4 *	9.5 ↘
	10.8 *	10.1 ↗	10.4 *	10.5 *	10.1 ↖
beste Teiler	96.8 (56.)	351.7 (59.)	418.9 (54.)		
Trefferlage	0.95 mm links, 3.88 mm hoch				
Streuwert	4.49, horizontal: 4.47, vertikal: 4.51				

Meyton Elektronik