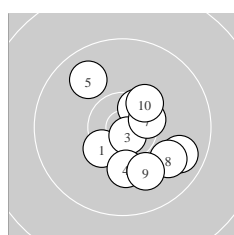
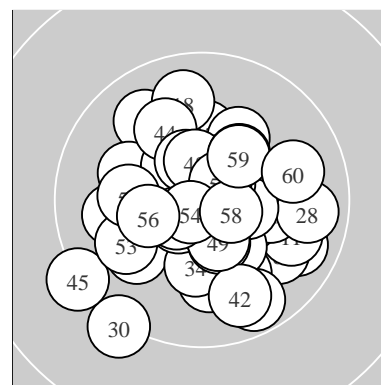
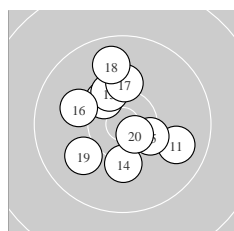


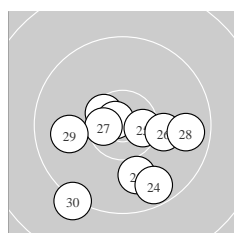
Ergebnis: **615.9** (588)
 Serien: 102.3 102.0 101.4 103.6 103.0 103.6
 Zähler: 48 12 0 0 0 0 0 0 0
 Innenzehner: 34
 weiteste: 1357 (30), 1322 (45), 1008 (24)
 beste Teiler 133.1 (22.) 142.9 (46.) 146.6 (3.)
 Trefferlage 0.25 mm rechts, 0.70 mm tief
 Streuwert 4.36, horizontal: 4.32, vertikal: 4.40



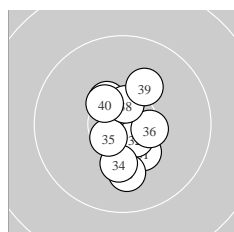
Serie 1:
 10.4 * 10.5 * 10.8 * 10.2 ↓ 9.9 ↖
 9.8 ↘ 10.5 * 9.9 ↘ 10.0 ↓ 10.3 *
 beste Teiler 146.6 (3.) 351.3 (2.) 383.3 (7.)
 Trefferlage 2.07 mm rechts, 1.13 mm tief
 Streuwert 4.38, horizontal: 4.12, vertikal: 4.62



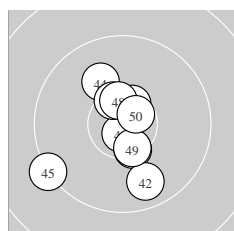
Serie 2:
 9.9 ↘ 10.4 * 10.3 * 10.2 ↓ 10.4 *
 10.1 ↖ 10.2 ↑ 9.8 ↑ 10.0 ↙ 10.7 *
 beste Teiler 237.0 (20.) 451.3 (15.) 454.8 (12.)
 Trefferlage 0.45 mm links, 0.86 mm hoch
 Streuwert 4.69, horizontal: 4.40, vertikal: 4.97



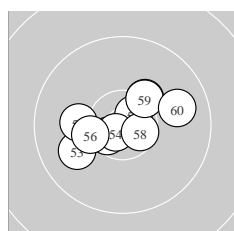
Serie 3:
 10.5 * 10.8 * 10.0 ↓ 9.7 ↓ 10.6 *
 10.2 → 10.6 * 9.8 → 9.9 ← 9.3 ↙
 beste Teiler 133.1 (22.) 286.8 (27.) 304.3 (25.)
 Trefferlage 0.31 mm rechts, 2.93 mm tief
 Streuwert 5.18, horizontal: 5.74, vertikal: 4.55



Serie 4:
 10.3 * 10.6 * 10.0 ↓ 10.2 ↓ 10.6 *
 10.4 * 10.4 * 10.6 * 10.1 ↗ 10.4 *
 beste Teiler 284.2 (32.) 290.7 (35.) 296.9 (38.)
 Trefferlage 0.55 mm rechts, 0.70 mm tief
 Streuwert 3.53, horizontal: 2.46, vertikal: 4.35



Serie 5:
 10.4 * 9.8 ↓ 10.5 * 10.1 ↖ 9.3 ↙
 10.8 * 10.5 * 10.5 * 10.5 * 10.6 *
 beste Teiler 142.9 (46.) 244.6 (50.) 332.3 (43.)
 Trefferlage 0.70 mm links, 0.67 mm tief
 Streuwert 4.59, horizontal: 4.14, vertikal: 5.00



Serie 6:
 10.6 * 10.7 * 10.0 ↙ 10.8 * 10.1 ←
 10.3 * 10.3 * 10.6 * 10.3 * 9.9 →
 beste Teiler 150.6 (54.) 227.0 (52.) 280.4 (58.)
 Trefferlage 0.25 mm links, 0.33 mm hoch
 Streuwert 3.93, horizontal: 4.90, vertikal: 2.61

Meyton Elektronik