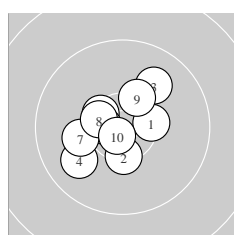
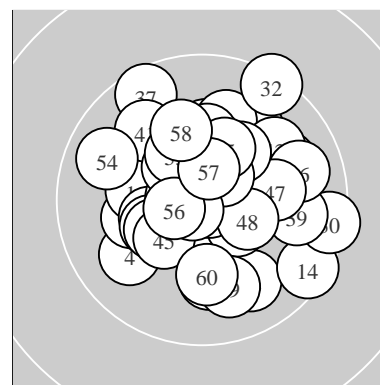
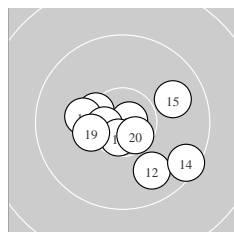


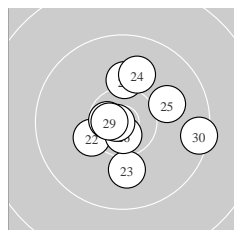
Ergebnis: **617.3** (587)  
 Serien: 103.5 102.8 102.9 102.9 102.1 103.1  
 Zähler: 47 13 0 0 0 0 0 0 0  
 Innenzehner: 34  
 weiteste: 1222 (32), 1175 (30), 1140 (14)  
 beste Teiler 75.6 (38.) 90.7 (40.) 95.5 (34.)  
 Trefferlage 0.51 mm rechts, 0.66 mm hoch  
 Streuwert 4.26, horizontal: 4.47, vertikal: 4.03



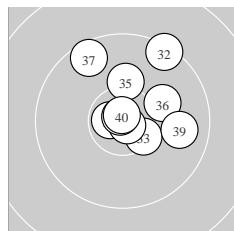
Serie 1:  
 10.4 \* 10.4 \* 10.0 ↗ 9.9 ↙ 10.5 \*  
 10.6 \* 10.1 ← 10.5 \* 10.3 \* 10.8 \*  
 beste Teiler 155.6 (10.) 296.9 (6.) 378.5 (8.)  
 Trefferlage 1.22 mm links, 0.26 mm hoch  
 Streuwert 3.81, horizontal: 4.06, vertikal: 3.54



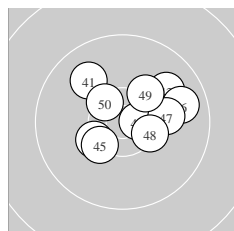
Serie 2:  
 10.8 \* 9.9 ↘ 10.4 \* 9.5 ↘ 9.9 →  
 10.2 ← 10.6 \* 10.6 \* 10.3 \* 10.6 \*  
 beste Teiler 102.6 (11.) 241.6 (18.) 276.5 (20.)  
 Trefferlage 0.63 mm rechts, 1.36 mm tief  
 Streuwert 4.43, horizontal: 5.30, vertikal: 3.34



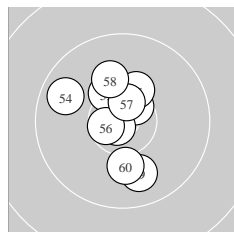
Serie 3:  
 10.2 ↑ 10.3 \* 10.0 ↓ 10.0 ↑ 10.0 →  
 10.7 \* 10.8 \* 10.7 \* 10.7 \* 9.5 →  
 beste Teiler 95.6 (27.) 196.3 (26.) 199.2 (29.)  
 Trefferlage 1.15 mm rechts, 0.30 mm hoch  
 Streuwert 4.52, horizontal: 4.75, vertikal: 4.27



Serie 4:  
 10.7 \* 9.4 ↗ 10.5 \* 10.8 \* 10.2 ↑  
 10.1 → 9.6 ↘ 10.9 \* 9.9 → 10.8 \*  
 beste Teiler 75.6 (38.) 90.7 (40.) 95.5 (34.)  
 Trefferlage 1.77 mm rechts, 2.60 mm hoch  
 Streuwert 4.37, horizontal: 4.21, vertikal: 4.53



Serie 5:  
 9.9 ↘ 10.7 \* 9.9 ↗ 10.3 \* 10.3 \*  
 9.8 → 10.1 → 10.4 \* 10.3 ↗ 10.4 \*  
 beste Teiler 225.3 (42.) 401.4 (50.) 448.6 (48.)  
 Trefferlage 1.62 mm rechts, 1.40 mm hoch  
 Streuwert 4.32, horizontal: 5.13, vertikal: 3.32



Serie 6:  
 10.6 \* 10.8 \* 10.3 \* 9.8 ↙ 10.3 \*  
 10.6 \* 10.6 \* 10.1 ↘ 9.9 ↓ 10.1 ↓  
 beste Teiler 123.0 (52.) 264.4 (56.) 289.7 (57.)  
 Trefferlage 0.88 mm links, 0.76 mm hoch  
 Streuwert 4.14, horizontal: 3.30, vertikal: 4.83

Meyton Elektronik