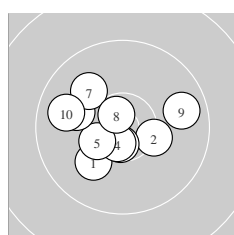
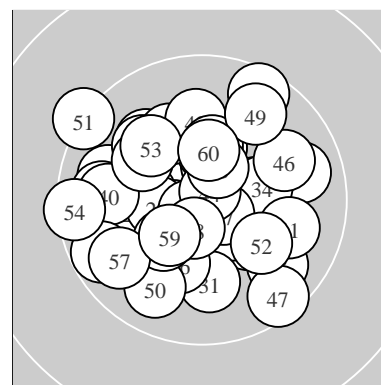
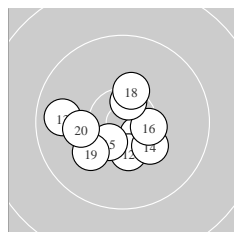


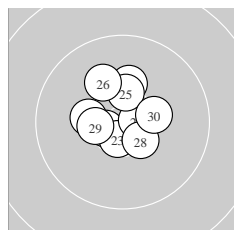
Ergebnis:	<b>612.0</b>	(585)						
Serien:	102.3	103.0	104.1	101.7	99.9	101.0		
Zähler:	45	15	0	0	0	0	0	0
Innenzehner:	29							
weiteste:	1310 (51), 1167 (54), 1119 (47)							
beste Teiler	106.8 (44.) 156.2 (35.) 211.5 (8.)							
Trefferlage	0.92 mm links, 0.05 mm tief							
Streuwert	4.64, horizontal: 4.98, vertikal: 4.29							



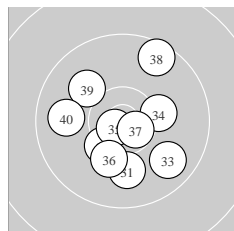
Serie 1:	10.1 ↙	10.3 *	10.6 *	10.6 *	10.4 *
	10.0 ↖	10.0 ↘	10.7 *	9.8 →	9.8 ←
beste Teiler	211.5 (8.) 255.2 (4.) 258.8 (3.)				
Trefferlage	1.73 mm links, 0.04 mm hoch				
Streuwert	4.44, horizontal: 5.35, vertikal: 3.29				



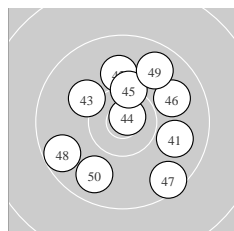
Serie 2:	10.6 *	10.4 *	9.8 ←	10.3 ↘	10.5 *
	10.4 *	10.5 *	10.3 *	10.1 ↙	10.1 ←
beste Teiler	302.3 (11.) 324.8 (17.) 366.6 (15.)				
Trefferlage	0.87 mm links, 1.07 mm tief				
Streuwert	3.91, horizontal: 4.54, vertikal: 3.17				



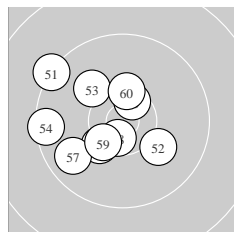
Serie 3:	10.2 ↑	10.6 *	10.6 *	10.7 *	10.4 *
	10.1 ↘	10.3 *	10.5 *	10.4 *	10.3 *
beste Teiler	218.0 (24.) 268.5 (23.) 276.3 (22.)				
Trefferlage	0.45 mm links, 1.15 mm hoch				
Streuwert	3.23, horizontal: 3.24, vertikal: 3.23				



Serie 4:	10.0 ↓	10.4 *	9.8 ↘	10.3 →	10.8 *
	10.2 ↙	10.7 *	9.6 ↑	10.0 ↘	9.9 ←
beste Teiler	156.2 (35.) 236.0 (37.) 479.3 (32.)				
Trefferlage	0.01 mm links, 0.88 mm tief				
Streuwert	5.15, horizontal: 5.01, vertikal: 5.29				



Serie 5:	9.9 →	10.0 ↑	10.1 ↘	10.8 *	10.3 *
	9.9 →	9.6 ↘	9.7 ↙	9.8 ↑	9.8 ↙
beste Teiler	106.8 (44.) 501.6 (45.) 651.7 (43.)				
Trefferlage	0.94 mm rechts, 0.40 mm hoch				
Streuwert	6.01, horizontal: 5.93, vertikal: 6.09				



Serie 6:	9.3 ↘	10.1 ↘	10.1 ↘	9.5 ←	10.3 *
	10.5 *	9.8 ↙	10.6 *	10.4 *	10.4 *
beste Teiler	267.1 (58.) 329.6 (56.) 438.1 (59.)				
Trefferlage	3.43 mm links, 0.02 mm hoch				
Streuwert	5.00, horizontal: 5.44, vertikal: 4.52				

Meyton Elektronik